

# 9750 Foam insert Kraftform Kompakt and Tool-Check PLUS set 1, 57 pieces



## Foam inserts for roller cabinet



<b>EAN:</b>	4013288225344	<b>Size:</b>	405x185x55 mm
<b>Part number:</b>	05150150001	<b>Weight:</b>	1468 g
<b>Article number:</b>	9750	<b>Country of origin:</b>	CZ
		<b>Customs tariff number:</b>	84661038

- Durable foam insert, each tool has its own place; two-coloured, missing tools will quickly be noticed
- High-quality, durable foam insert without chemical vapours
- Optimum fit for the best possible removal of the tools from the foam insert
- Water- and oil-repellent, low maintenance and easy to clean
- Protection of the tool from dirt and impact
- Kraftform Kompakt 60: Folding bag with 89 mm long bits and 816 R bitholding screwdriver with Rapidaptor quick-release chuck and multi-component Kraftform handle for fatigue-free working
- Tool-Check PLUS: 39-piece tool combination of ratchet, sockets and one bitholding screwdriver
- Bitholding screwdriver extra slim with flexible shaft and very slim design for working in confined spaces

Durable foam insert; two-coloured for quick identification of missing parts; suitable for the Tool Rebel roller cabinet; equipped with Wera Kraftform Kompakt 60, Tool-Check PLUS as well as 393 S extra slim bitholding screwdriver with flexible shaft.

### Web link

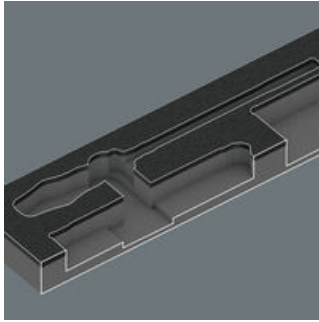
[https://products.wera.de/en/roller\\_cabinet\\_and\\_foam\\_inserts\\_foam\\_inserts\\_for\\_roller\\_cabinet\\_9750.html](https://products.wera.de/en/roller_cabinet_and_foam_inserts_foam_inserts_for_roller_cabinet_9750.html)

Wera - 9750  
05150150001 - 4013288225344



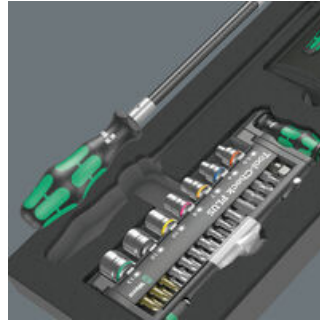
Foam inserts for roller cabinet

Safe storage and quick overview



The tools sit securely in the foam thanks to precise contour cutouts, but are easy to remove. The carefully designed arrangement of the tools ensures space-saving storage and quick access to each tool.

Two-coloured foam insert



After removing the tool the light grey second foam becomes visible and therefore missing tools are quickly identified.

Tool-Check PLUS



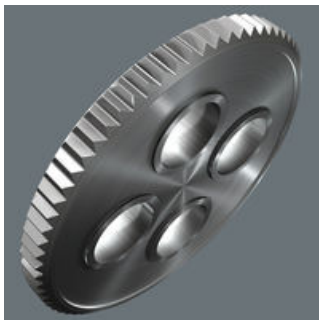
Tool combination of 1/4" Zyklop Mini ratchet, sockets, one bitholding screwdriver and bits in a space-saving Tool-Check PLUS case made of robust plastic.

Rapid screwdriving



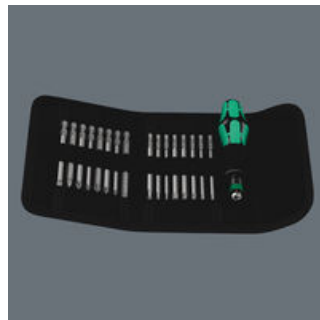
High working speeds can be attained with the Zyklop Mini ratchet. The thumb wheel is important, enabling more rapid screwdriving, and the lever of the Zyklop Mini only needs to be used for the final tightening of the screw.

Small return angle



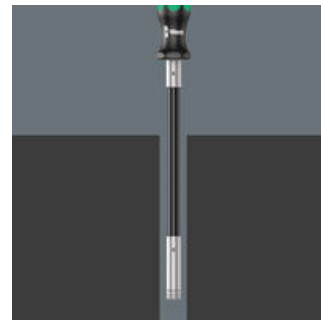
The fine tooth mechanism, with its 60 teeth, allows a small return angle of only 6° - ideal for precision work.

Kraftform Kompakt 60



Folding bag with 16 bits (89 mm long) and one 816 R bitholding screwdriver with Rapidaptor quick-release chuck

Slim bit holder 393 S



The particularly slim bit holder allows working in very tight work spaces.

Take it easy tool finder system



Take it easy tool finder system - with profile and size colour-coding for quick and easy tool selection. Colour-coded system for hexagon drive screws (L-Keys, Zyklop bit sockets), external hex drive screws and nuts (Joker wrenches, Zyklop sockets and Zyklop bit sockets with holding function), and TORX® drive screws (L-Keys, Zyklop bit sockets).

Web link

[https://products.wera.de/en/roller\\_cabinet\\_and\\_foam\\_inserts\\_foam\\_inserts\\_for\\_roller\\_cabinet\\_9750.html](https://products.wera.de/en/roller_cabinet_and_foam_inserts_foam_inserts_for_roller_cabinet_9750.html)

Wera - 9750  
05150150001 - 4013288225344

Wera Werkzeuge GmbH  
Korzter Straße 21-25  
D-42349 Wuppertal  
Tel: +49 (0)2 02 / 40 45-0  
E-Mail: info@wera.de

## 9750 Foam insert Kraftform Kompakt and Tool-Check PLUS set 1, 57 pieces

### Foam inserts for roller cabinet



#### Set contents:

##### Tool-Check PLUS, 39 pieces



05056490001 1x 39 pieces



##### Kraftform Kompakt 60, 17 pieces



05059295001 1x 17 pieces



##### 393 S Bitholding screwdriver extra slim with flexible shaft, 1/4" x 173.5 mm



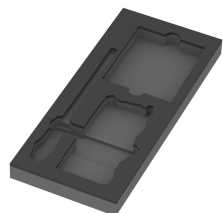
05028161001 1x 1/4" x 173.5 mm



##### 9850 Foam insert Kraftform Kompakt and Tool-Check PLUS set 1, empty, 172 x 30 x 392 mm

05137350001<sup>1)</sup> 1x 172 x 30 x 392 mm

1) Attention: The foam insert does not fit in the previous model 05501051001 of the roller cabinet.



#### Web link

[https://products.wera.de/en/roller\\_cabinet\\_and\\_foam\\_inserts\\_foam\\_inserts\\_for\\_roller\\_cabinet\\_9750.html](https://products.wera.de/en/roller_cabinet_and_foam_inserts_foam_inserts_for_roller_cabinet_9750.html)

Wera - 9750

05150150001 - 4013288225344

Wera Werkzeuge GmbH

Korzter Straße 21-25

D-42349 Wuppertal

Tel: +49 (0)2 02 / 40 45-0

E-Mail: [info@wera.de](mailto:info@wera.de)